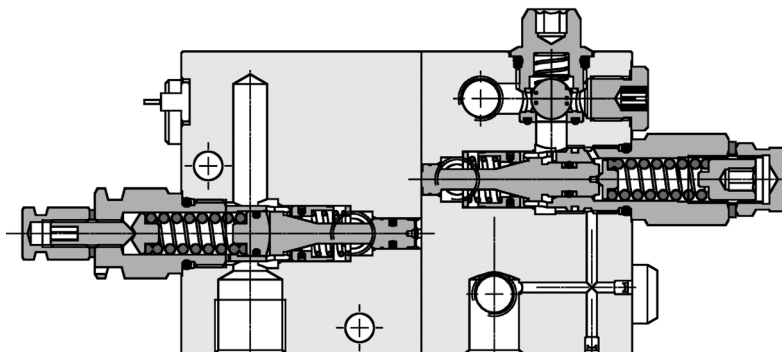
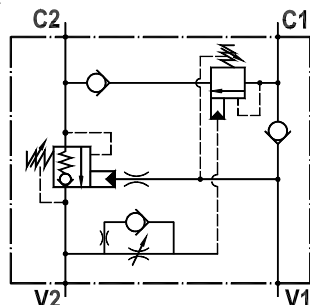


Valvola overcenter doppia, montaggio in linea, per circuito rigenerativo
Dual overcenter valve, line mounted, for regenerative circuits

Rev.01-2010/02



SPECIFICHE TECNICHE

Materiali: corpo in acciaio zincato. I componenti interni sono in acciaio trattato termicamente.

Portata max.: 60 l/min

Taratura max.: 430 bar

Pressione max. di lavoro: 350 bar

Rapporto di pilotaggio: 1 : 4.2

Regolazione pressione: mediante vite

Campo di regolazione pressione: vedere pag. 02

Peso: 5,300 Kg

TECHNICAL SPECIFICATIONS

Materials: body in zinc plated steel. Internal parts are in hardened steel.

Rated flow: up to 60 l/min

Max. setting: 430 bar

Max. working pressure: 350 bar

Pilot ratio: 1 : 4.2

Adjustment means: leakproof screw adjustment

Adjustable pressure range: see page 02

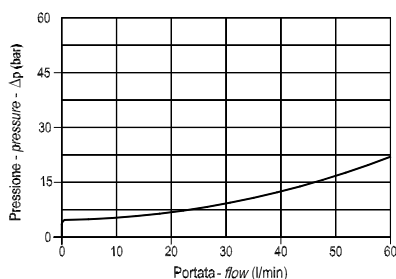
Weight: 5,300 Kg

DIAGRAMMA PERDITE DI CARICO - PRESSURE DROP CURVES

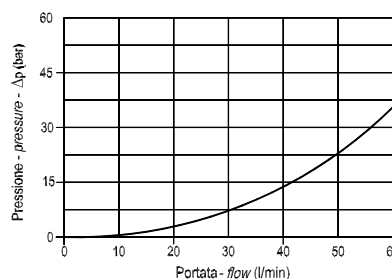
Viscosità olio 24 mm²/sec. (3,5 °E)
 Temperatura 50 °C

Oil viscosity 24 mm²/sec. (3,5 °E)
 Temperature 50 °C

V2 ► C2



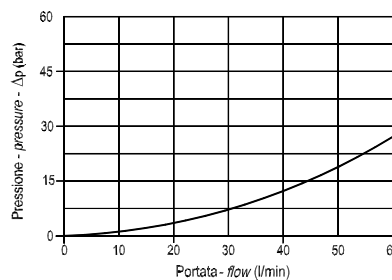
V1 ► C1



C1 ► C2

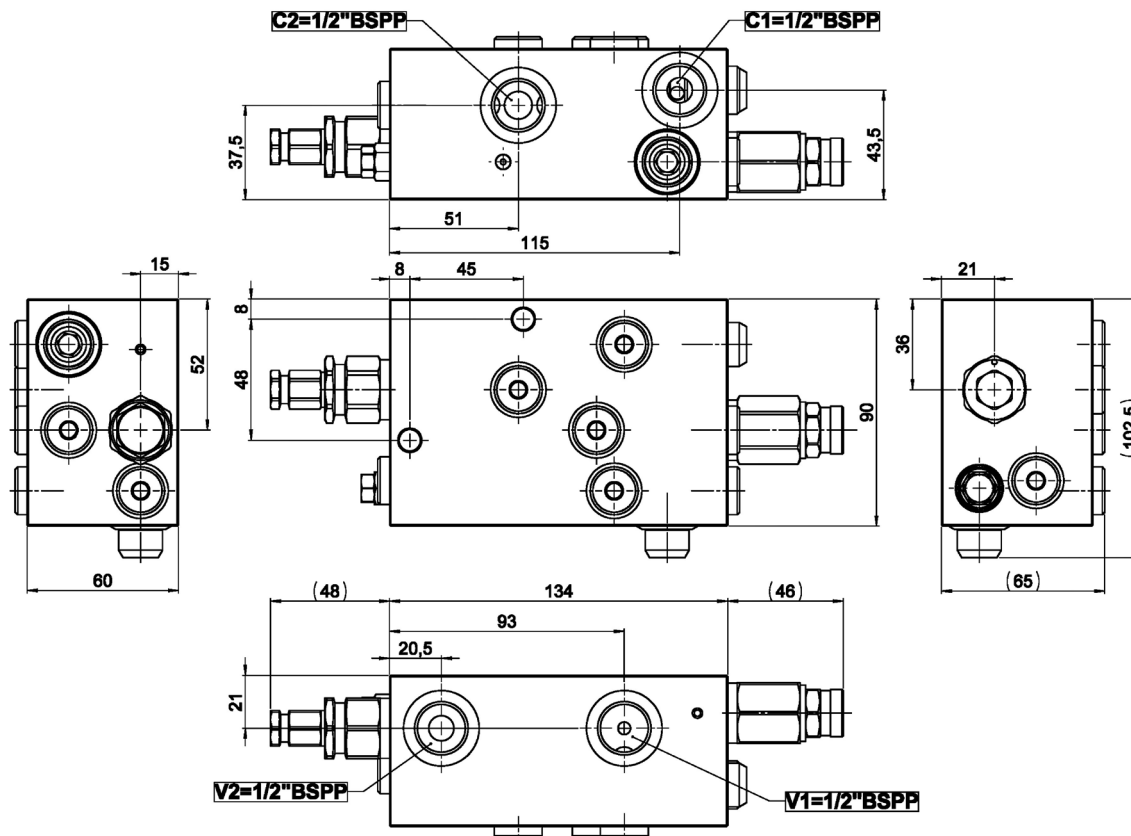


C2 ► V2



Valvola overcenter doppia, montaggio in linea, per circuito rigenerativo
Dual overcenter valve, line mounted, for regenerative circuits

Rev.01-2010/02



MOLLE - SPRINGS				*
Codice Code	Rapp. pil. Pilot ratio	Campo taratura min.-max. bar Adjustable pressure range bar	Increment. press. bar/giro vite Pressure increase bar/turn	Taratura standard bar Standard setting bar
35	1 : 4.2	80 - 350	120	280

ESEMPIO DI ORDINAZIONE - ORDERING CODE EXAMPLE

F P O R **6 0** **D** **1 / 2** **L** **3 5** *****

Guarnizioni - Seals:
V=Viton *
Omettere se BUNA-N - Omit if BUNA-N